

BALI HA'I



© 2011 *StitchPlay Designs, LLC*

Carole H. Lake and Michael E. Boren

4003 Edgefield Ct.

Austin, TX 78731

www.stitchplay.com

Materials Lists

Original Colorway

8" x 8" 18-mono Buttercream canvas
8" x 8" Stretcher Bars—we recommend Evertites™

Caron Collection:

Watercolours: 086 (Tahiti)
Waterlilies: 086 (Tahiti)
Soie Cristale: 3042
Impressions: 3041

Kreinik: #8 (Fine) Braid: 127

.....

Scheherazade Colorway

8" x 8" 18-mono Lilac canvas
8" x 8" Stretcher Bars—we recommend Evertites™

Caron Collection:

Watercolours: 184 (Scheherazade)
Waterlilies: 184 (Scheherazade)
Soie Cristale: 6013
Impressions: 6010

Kreinik: #8 (Fine) Braid: 5007

.....

Monsoon Colorway

8" x 8" 18-mono French Blue canvas
8" x 8" Stretcher Bars—we recommend Evertites™

Caron Collection:

Watercolours: 197 (Monsoon)
Waterlilies: 197 (Monsoon)
Soie Cristale: 7003
Impressions: 7001

Kreinik: #8 (Fine) Braid: 393

.....

Nile Sundown Colorway

8" x 8" 18-mono Victorian Red canvas
8" x 8" Stretcher Bars—we recommend Evertites™

Caron Collection:

Watercolours: 282 (Nile Sundown)
Waterlilies: 282 (Nile Sundown)
Soie Cristale: 4005
Impressions: 4003

Kreinik: #8 (Fine) Braid: 3280

.....

Forest Fire Colorway

8" x 8" 18-mono Sage Green canvas
8" x 8" Stretcher Bars—we recommend Evertites™

Caron Collection:

Watercolours: 120 (Forest Fire)
Waterlilies: 120 (Forest Fire)
Soie Cristale: 8022
Impressions: 8020

Kreinik: #8 (Fine) Braid: 829

.....

Williamsburg Colorway

8" x 8" 18-mono Rose Blush canvas
8" x 8" Stretcher Bars—we recommend Evertites™

Caron Collection:

Watercolours: 040 (Williamsburg)
Waterlilies: 040 (Williamsburg)
Soie Cristale: 7003
Impressions: 7001

Kreinik: #8 (Fine) Braid: 044

Bali Ha'i

Refer to the Master Chart page 7 for placement of stitches in the design.

Step One: The Double Fan Doubled

Begin by stitching a double fan doubled in the center of the canvas using 1 ply of the 3-ply strand Watercolours and 1 strand Kreinik #8 braid. *Note: Do NOT cut through the skein of Watercolours. We will be using a long length.*

First, find the center hole of your canvas, and widen it with your needle. Thread up with a 72" length of Watercolours (one ply from the three-ply strand), and place a waste knot at least 4" from the center of the canvas.

Diagram 1: Count from the center hole to find #1. Make stitch 1-2 leaving it slightly loose. Come up at 3, loop under stitch 1-2, go down at 4. Adjust the cross so that it is centered over the center hole. Check your counting!

Diagram 2: Make stitch 5-6 on top of the first two stitches, leaving it slightly loose. Come up at 7, loop under stitch 5-6, go down at 8. Adjust the cross so that it is centered over the center hole. Check your counting again!

There are now two crosses one on top of the other, centered over the center hole. Think of the threads as eight spokes. We will be adding threads to make each spoke wider by coming up, weaving **under and over and under and over** intervening spokes and going down. This is not difficult, but you do need to follow the numbers carefully.

With your needle pointing to the left, come up at 9, go under 4, over 5, under 8, over 3 and down at 10.

With your needle pointing to the right, come up at 11, go under 10 & 2, over 7, under 6, over 1 & 9 and down at 12.

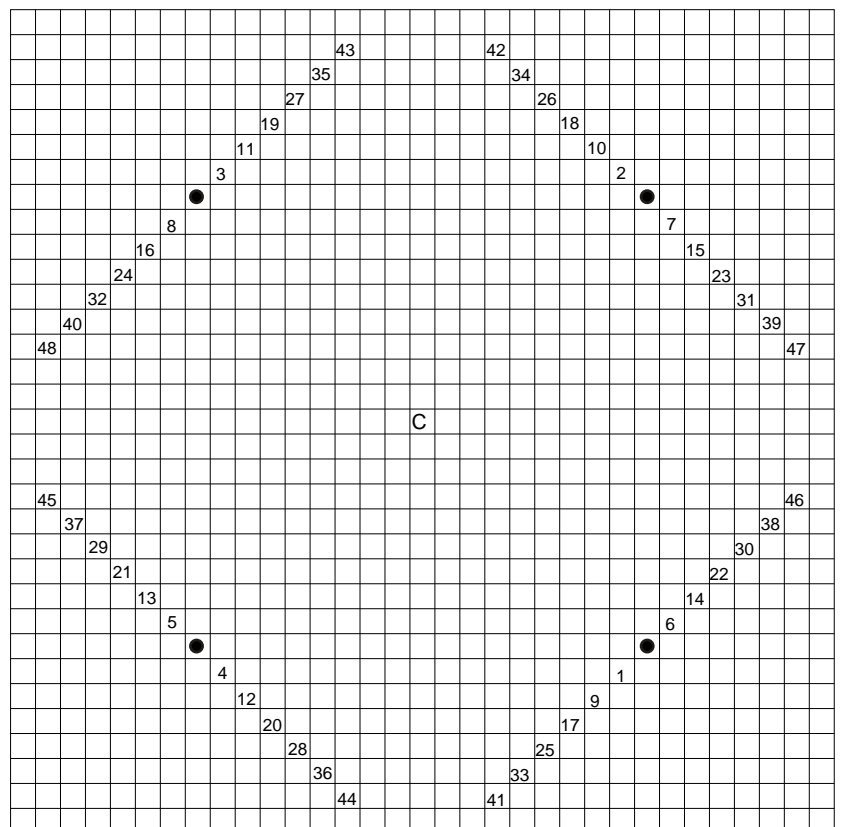
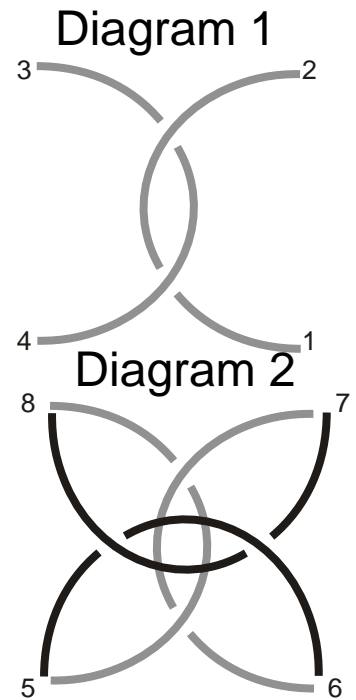
With your needle pointing up, come up at 13; go under spoke 8, over 3 & 11, under 10 & 2, over 7; and go down at 14.

With your needle pointing down, come up at 15, go under 14 & 6, over 1 & 9 under 12 & 4, over 5 & 13 and down at 16.

Each stitch comes up, goes under-over-under-over, goes down. Always go **CLOCKWISE**. Continue in this same pattern, following the diagram. Don't worry about the long threads on the back. However, if it looks tangled in the center of the motif on the front, go back to find your mistake. Work five (5) rounds in Watercolours, stitches 1-2 through 39-40. Tie off the Watercolours in the back of the double fan doubled, and tie off your waste knot in the same manner.

Step Two: Use a 24" length of Kreinik #8 braid to stitch a 6th round in the double fan doubled (stitches 41-42 through 47-48). Do not tie off.

Step Three: Continuing with the Kreinik #8 braid, work a cross under the double fan doubled, carefully sliding your needle under all the stitches. This stitch goes from black dot to black dot on the diagram. Tie off in the back of the double fan doubled.

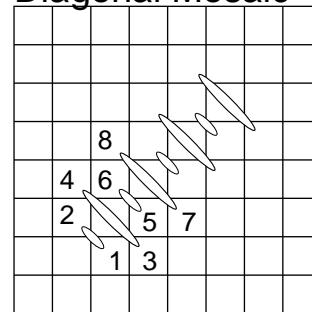


Step Four: Use 3 plies Waterlilies to stitch a diamond of diagonal mosaic around the double fan doubled.

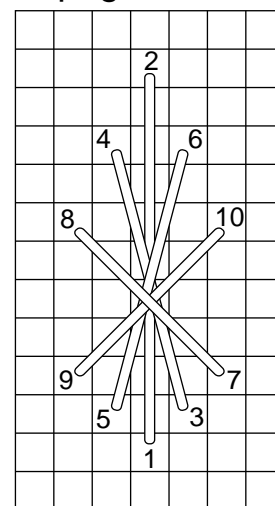
Step Five: In the spaces left in the corners of the double fan doubled work fancy double upright cross stitches using 3 plies Soie Cristale. Note that the 1-2 stitch points toward the center of the design, no matter which of the four sides it is on. Refer to the main diagram on p. 7.

Step Six: Form the corners in the reverse tied Scotch stitch. Use 1 ply from the 3-ply strand Watercolours for the main stitches and tie them down with Kreinik #8 braid.

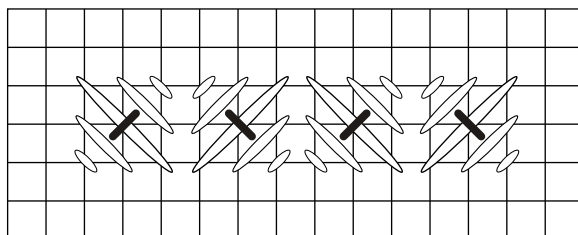
Diagonal Mosaic



Fancy Double Upright Cross

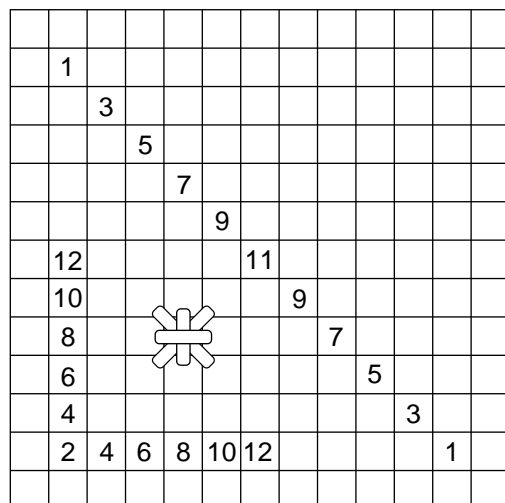


Reverse Tied Scotch

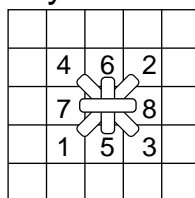


Step Seven: Using 3 plies Soie Cristale, stitch pairs of Amadeus stitches in each corner. Each stitch goes over the previous stitch. *Note that hole 2 and 11 are the same on both stitches (where they touch). There is a Smyrna Cross stitch in the middle of this in Kreinik #8 braid.

Amadeus Stitch

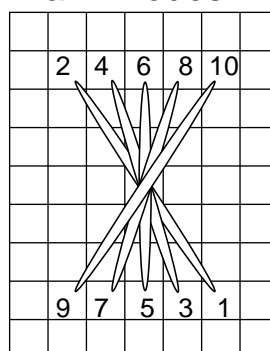


Smyrna Cross

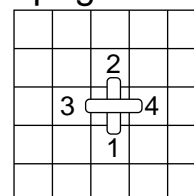


Step Eight: Leaving one thread empty outside the reverse tied Scotch stitches make rows of half-Rhodes stitches along the sides, using 1 strand Impressions. Using Kreinik #8 braid, make an upright cross between each half-Rhodes stitch.

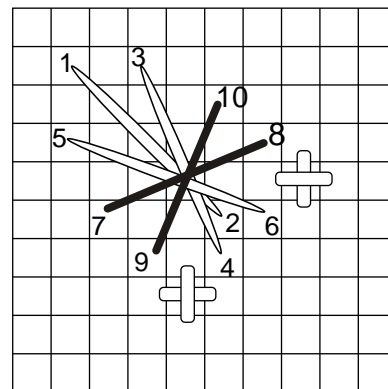
Half-Rhodes



Upright Cross

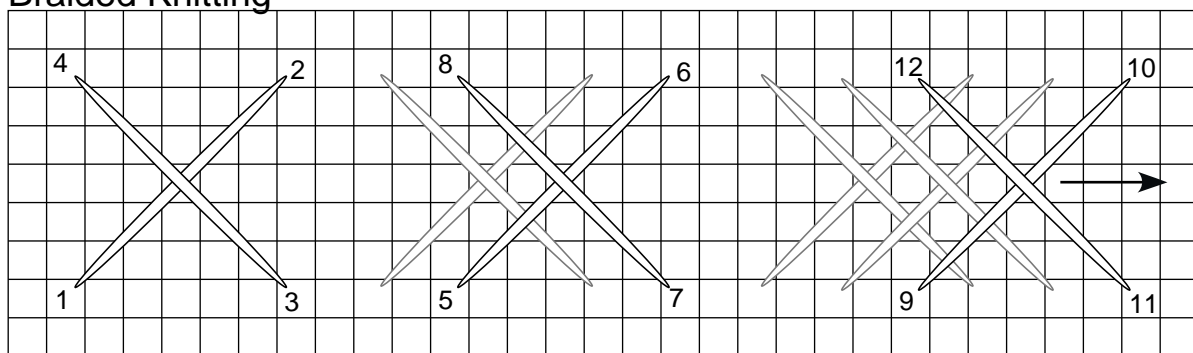


Step Nine: Using 3 plies Soie Cristale and 1 strand Kreinik #8 braid, make a decorative cross stitch in each corner of the square made by the half-Rhodes stitches. Stitch the first three stitches in Soie Cristale. On top of these stitches, make a cross in Kreinik braid. **The #1 stitch points toward the corner of the design, no matter which of the four sides it is on. Refer to the main graph, p. 7.**



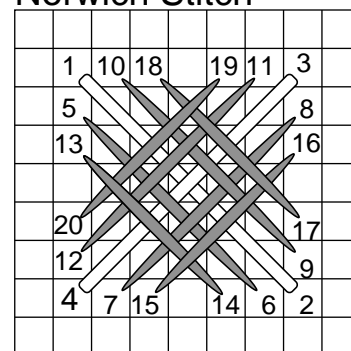
Step Ten: There is one open thread between the row of half-Rhodes stitches and this stitch. Beginning and ending one thread outside the perimeter of the half Rhodes square, make a row of braided knitting stitch on each side using 3 plies Waterlilies. Work the braided knitting stitch from left to right. There is no compensation at the beginning or at the end of the row. Note the stitches are over six threads vertically and six threads horizontally. Refer to the main graph.

Braided Knitting

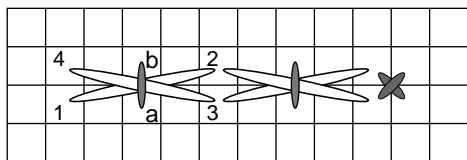


Step Eleven: In the corners made by the braided knitting stitch is the Norwich Stitch. The 1-2 and 3--4 stitches are stitched using 1 ply of the 3-ply strand Watercolours, while the rest of the stitches 5-6 through 19--20 are stitched using Kreinik #8 braid. **Notice that stitch 19-20 slides under stitch 13-14 to complete the pattern.**

Norwich Stitch

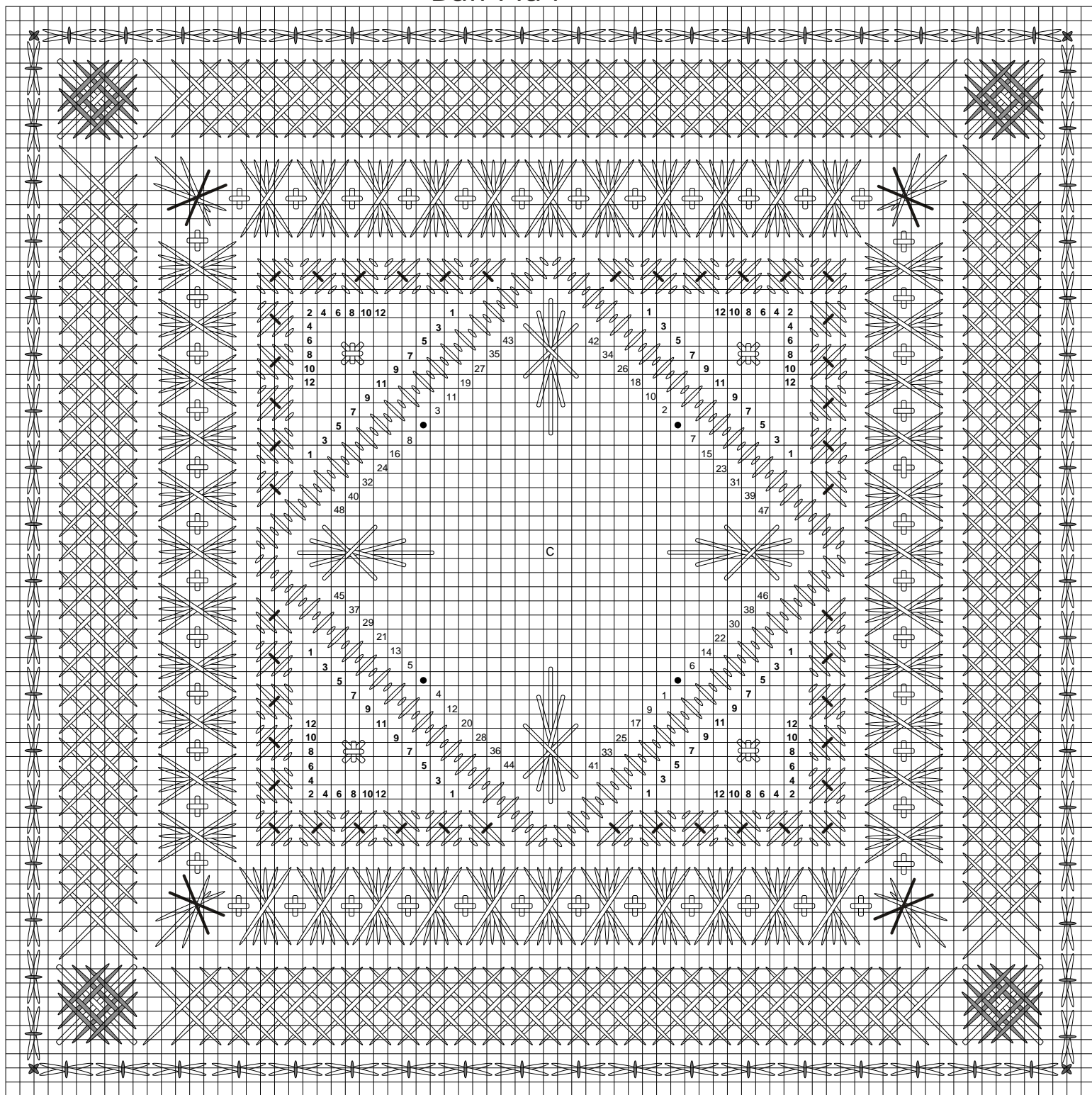


Tied Oblong Cross with small Cross Stitch



Step Twelve: The outer border is tied oblong cross stitches, worked in 1 strand Impressions (for the crosses) and 1 strand Kreinik #8 braid (for the tie-downs and cross stitch corners). Work all of the crosses first, and then go back and stitch the tie-downs. Leave one thread empty between the braided knitting and this row. Turn the corners by making small cross stitches. Refer to main graph for stitch placement.

Bali Ha'i



©2012 StitchPlay Designs
Carole H. Lake and Michael E. Boren
www.stitchplay.com
4003 Edgefield Ct.
Austin, TX 78731
(512) 349-0390
FAX (512) 628-3560
email: carole@stitchplay.com
michael@stitchplay.com

Kit

Stitch Diagram & Layout Produced by:



sue dulle
611 East 109th Terrace
Kansas City, MO 64131
816-942-3733
sudu@kc.rr.com